

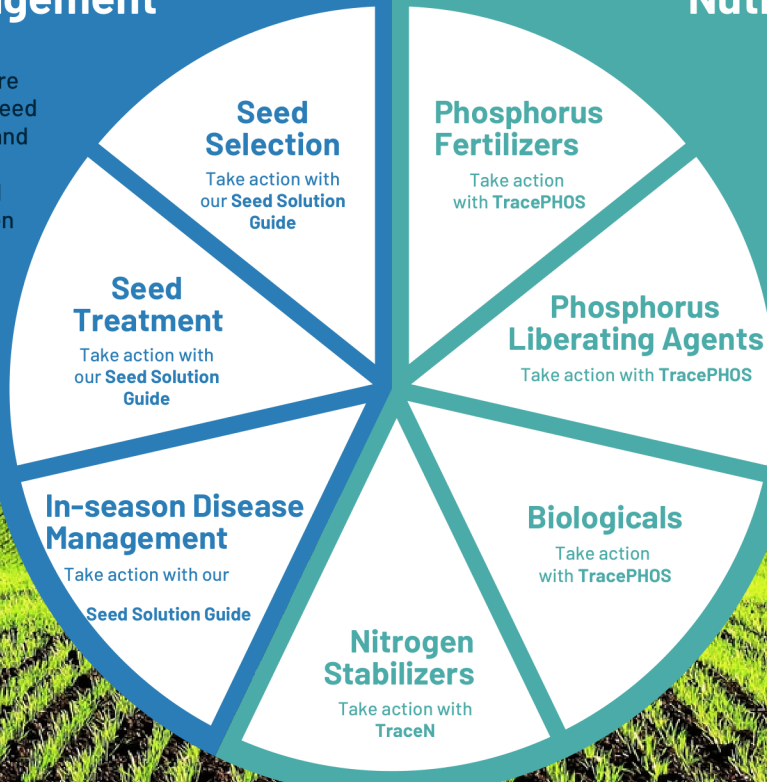
# Agronomy Insights. Activated.

TraceCOMPLETE™ pairs unmatched soil analysis with hi-definition genomic sequencing to deliver pathogen and nutrient insights that drive agronomic action in 7 key decision areas.



## Pathogen Management

Get a detailed assessment of +225 pathogens covering more than 70 crop types with our Seed Solution Guide. Our national and regional benchmarks provide context to enable meaningful interpretation of the pathogen levels in your fields.



## Nutrient Management

Our phosphorus and nitrogen diagnostic tools, TracePHOS™ and TraceN™, help you optimise biological performance and nutrient management. Identify which fields are saturated or deficient, and make decisions about allocating your input resources based on the unique conditions in your fields.

TraceCOMPLETE includes all the functionality and insights available from our Seed Solution Guide, TracePHOS, TraceN and other tools, as well as our full complement of diagnostic capabilities for soil biology and chemistry. Through our advanced genomics, unmatched data and built-in product solutions, we provide the information you need to take action and make meaningful management decisions.

To get started with TraceCOMPLETE connect with your local Taurus Rep or scan the QR code and fill out the form. <https://mailchi.mp/taurus/3dsz6glwj5>

