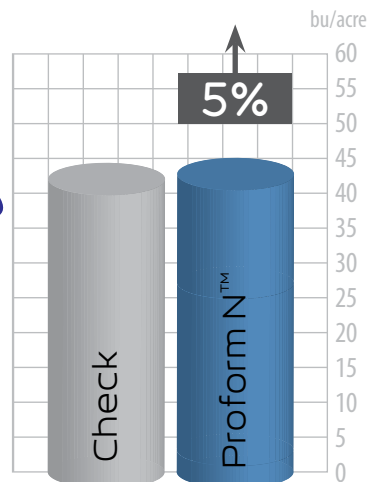




## YIELD DATA - 2 YEAR AVERAGE

Treatment	Yield (bu/acre)		Average Yield (bu/acre)	% Increase
	2016	2017		
Check	27.2	57.7	42.5	
Proform N™	31.2	58.2	44.7	5

3<sup>RD</sup> party field research with Mara, Ag-Quest, ICMS, Newmark Research



### OBSERVATIONS:

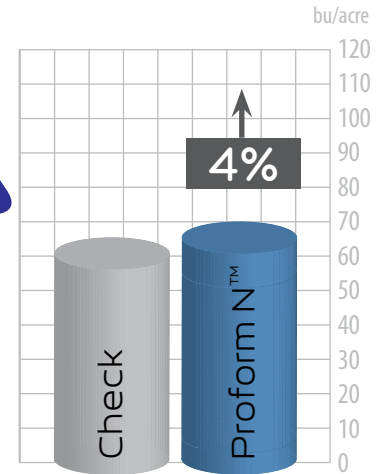
- Plants grow faster, stronger, and healthier



### YIELD DATA - 2017

Treatment	Yield (bu/acre)	Average Yield (bu/acre)	% Increase
	2017		
Check	63.0	63.0	
Proform N™	65.6	65.6	4

**+  
2.6  
bu/acre**

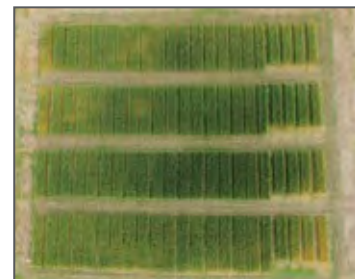


3<sup>RD</sup> party field research with Mara, Ag-Quest, ICMS, Newmark Research



### OBSERVATIONS:

- Plants grow faster, stronger, and healthier
- Increased protein content in grains

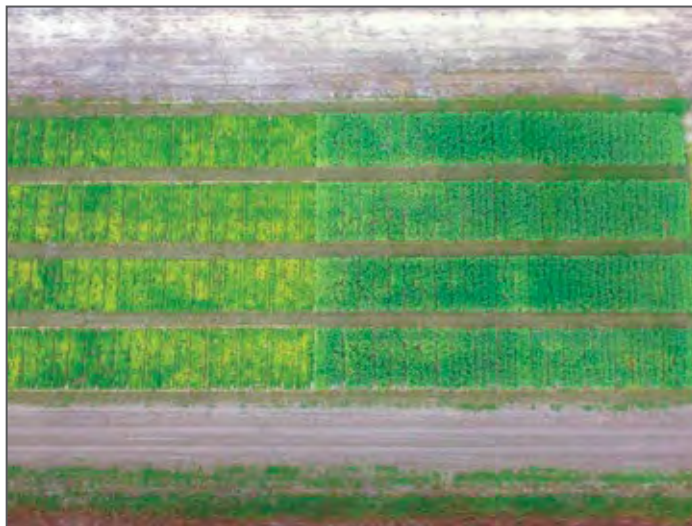
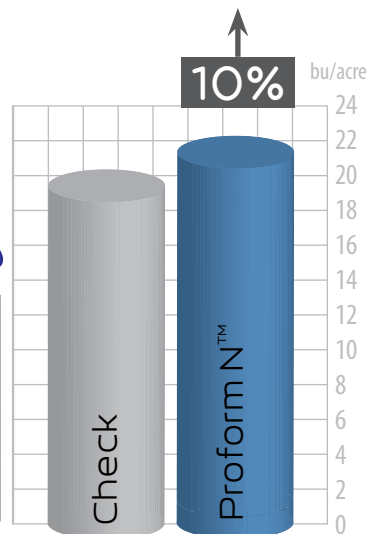




## YIELD DATA - 2017

Treatment	Yield (bu/acre)	Average Yield (bu/acre)	% Increase
	2017		
Check	19.8	19.8	
Proform N™	21.8	21.8	10

3<sup>rd</sup> party field research with Mara, Ag-Quest, ICMS, Newmark Research



### OBSERVATIONS:

- Plants grow faster, stronger, and healthier

**Active AgriScience Inc. DISCLAIMER:** Please read this limitation carefully as it impacts your legal rights. It is understood and agreed that Active AgriScience Inc. ("Active") does not guarantee that use of this Product will yield any specific results. Active's legal liability, and that of its employees or agents, arising from use of this product shall be limited to the cost paid for the product regardless of whether any loss arose from Active's own negligence or breach of contract or any other cause. Under no circumstances shall Active be liable, beyond the cost paid for the product, for direct, consequential, incidental, or special damages, including, but not limited to, damage or destruction of a crop, reduced yield from any crop, or contamination of any property. Use or sale of this product confirms acceptance of this limitation of legal liability.



**ACTIVE**<sup>TM</sup>  
AgriScience  
[activeagriscience.com](http://activeagriscience.com)

209 - 31136 Peardonville Rd,  
Abbotsford, BC, V2T 6K2, Canada  
tel.: 604.864.0154  
fax: 604.864.0156  
t.free: 1.855.400.0154

Distributed and supported by

***www.taurus.ag***

TECHNOLOGY PAST THE POINT OF NUTRITION<sup>TM</sup>